

[3-5].

—
 ,
 .
 ,
 (,),
).
 :

$$P = \omega^2 r V (\rho - \rho)$$

$$\omega -$$

$$r -$$

$$V -$$

$$\rho - \rho -$$

$$\omega^2 r / g$$
 (g -
 /²).

$$\rho = 2,67 / ^3$$
 .1
 . 1. $\rho - \rho$

	$\rho , / ^3$	$(\rho - \rho) , / ^3$
Al ₂ O ₃	3,99	1,33
SiC	3,2	0,54
	2,75	0,09
SiO ₂	2,65	-0,01
B ₄ C	2,5	-0,16
()	1,7	-0,96

. 1 , SiO₂, B₄C
 ,
 ,
 ,
 ,
 ,

(.2).
90 ,
60 , 60 .
.2.

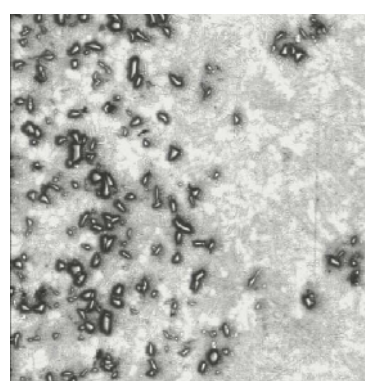
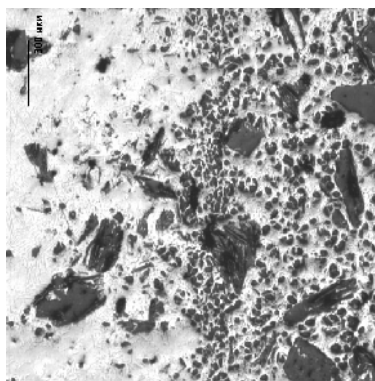
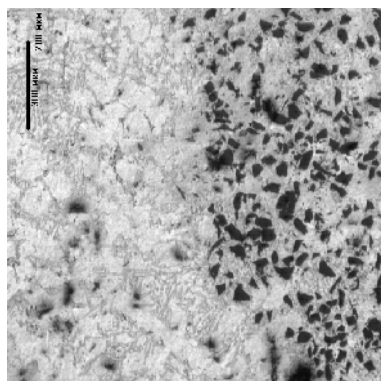
1	12-10%Al ₂ O ₃ (Ø = 40)
2	12+10% (Ø = 200-400)
3	12+2%Al ₂ O ₃ +3%
4	12+10%Al ₂ O ₃ +2%
5	12+10% ₄ (Ø≤60)
6	12 + 5% (Ø =12 , ≤3)

T = 210 ± 10° , T = 750 ± 10° , n = 1200
/ , 3 .

«Leica».

1 (4271-001-18606393-00).

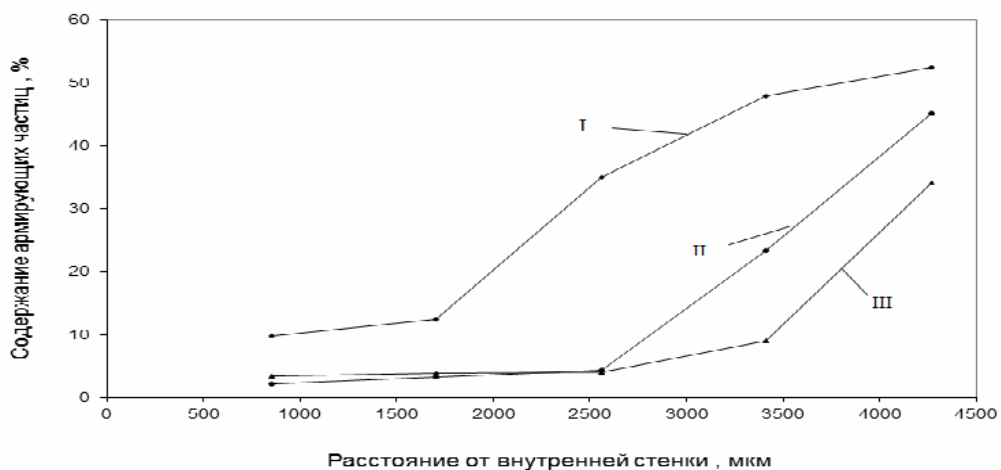
(.1 2) (.3 4)
(.1 3)
(.2 4).



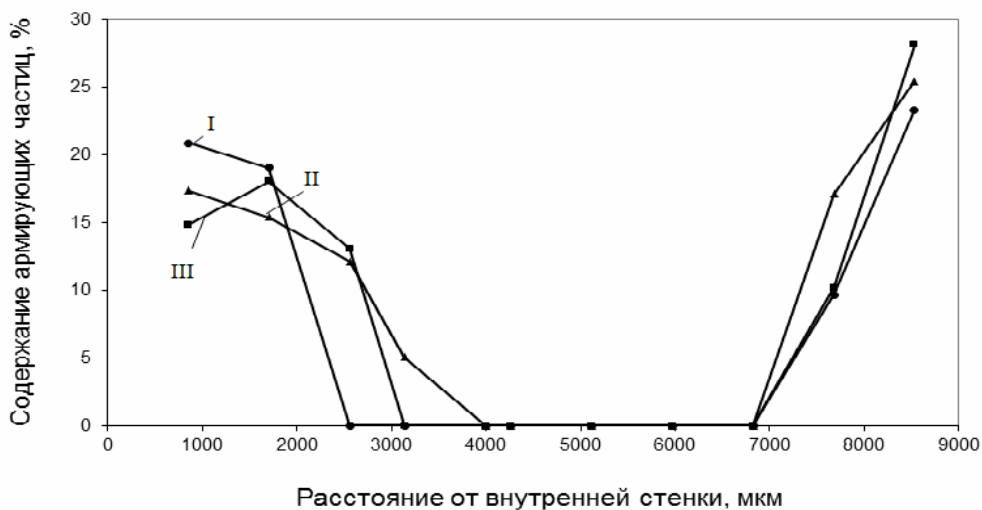
.1. ():
A 12 + 10%Al₂O₃ (); 12 + 2%Al₂O₃+ 3%C (); 12 + 10%₄ ()



)



)



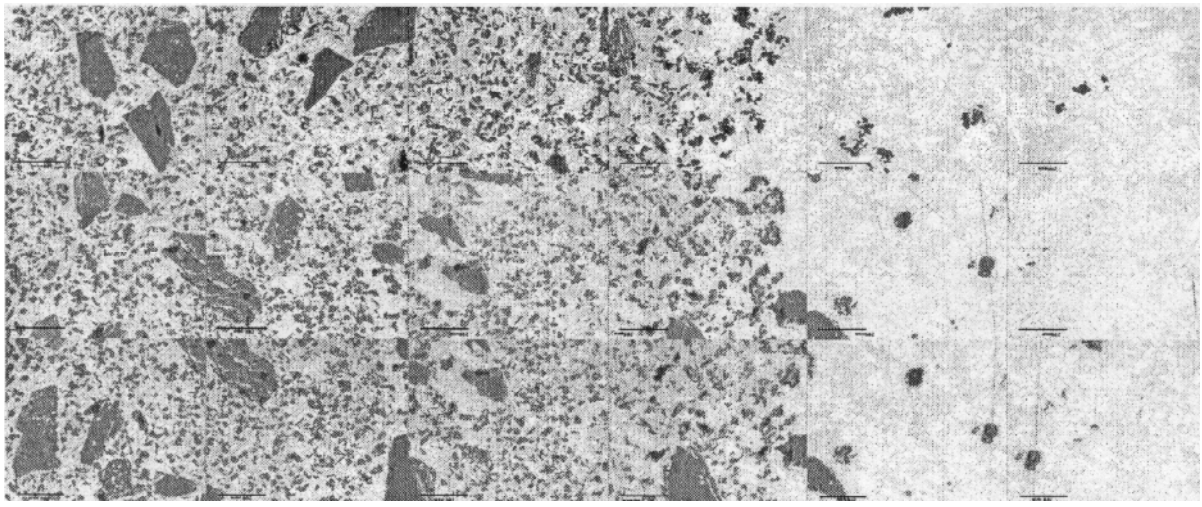
)

2. :
 А 12 + 10%Al₂O₃ (); 12 + 2%Al₂O₃ + 3%C (); 12 + 10% Al₂O₃ ();
 I, II, III – , ,

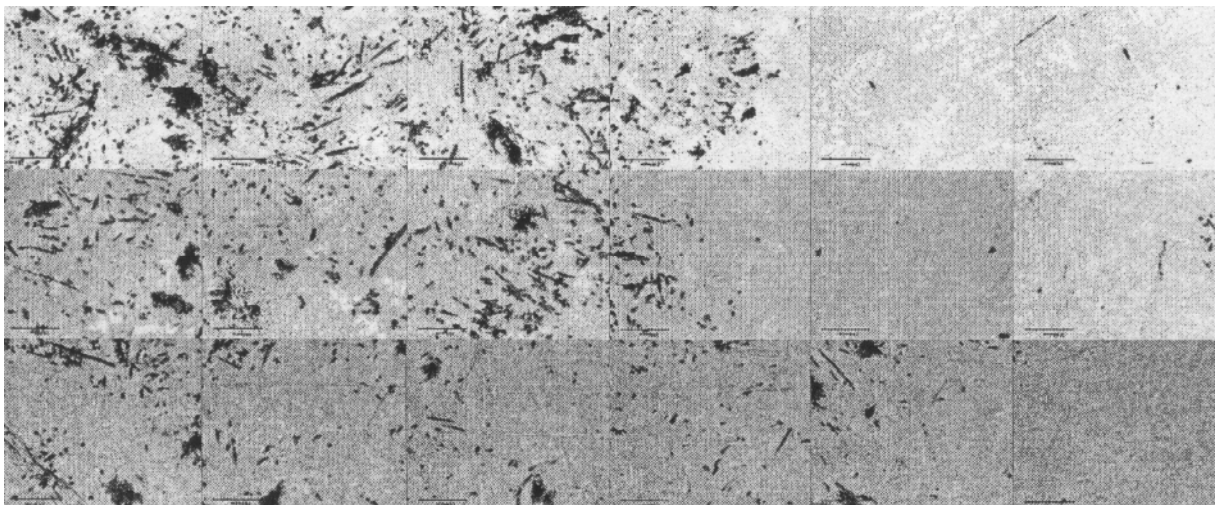
1

Al₂O₃

2



)



)

. 3.

(

);
12 + 10%Al₂O₃ + 2% (); 12 + 5% ()

3 4,

4,

Al₂O₃

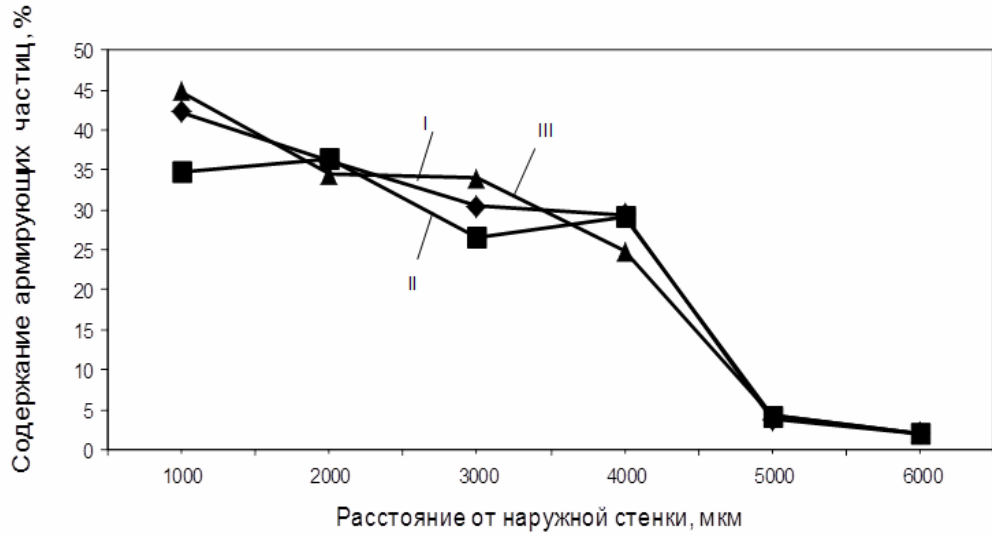
5

Al_2O_3 .

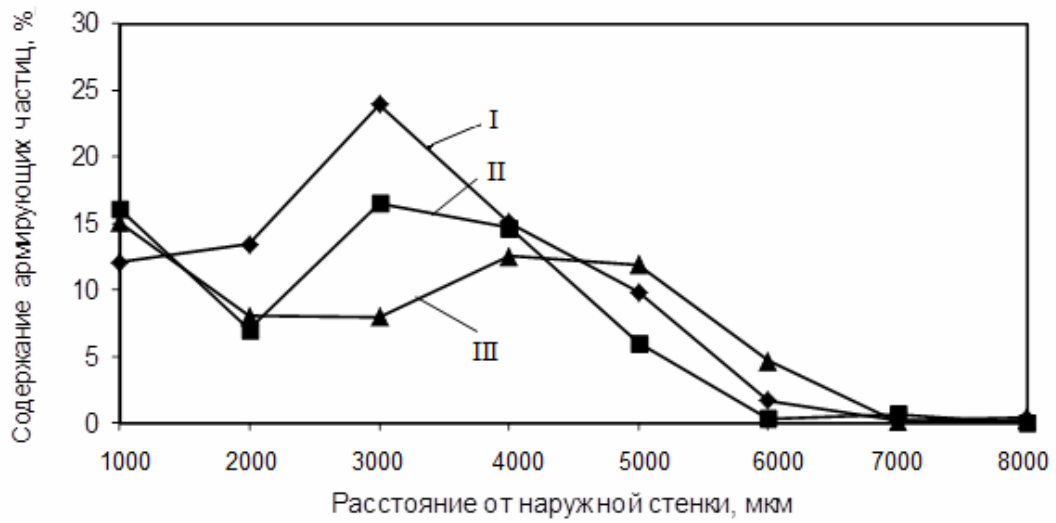
5,

4,

$\rho - \rho$



)



)

4. 12 + 10% Al_2O_3 + 2% (); 12 + 5% ();
 I, II, III – , ,

6,

12 (2) (6)
 1,1 – 1,2 .
 1,2 – 1,3 , -
 Al₂O₃. -
 . -
 , , ,
 (Al₂O₃) ,
 , -
 , -
 . -
 - 14 -198 16 -176.
 1. /
 : . , 2011. – 283 .
 2.
 , 2005. – 272 .
 3.
 // , 1999. – 5. – 50.
 4. Kevorkijan V. Functionally graded aluminum–matrix composites // American ceramic Society Bulletin, 2003. – V. 82. – Is. 2. – P. 60.
 5.
 //
 , 2010. – 2. – 5.

04.05.2016 .